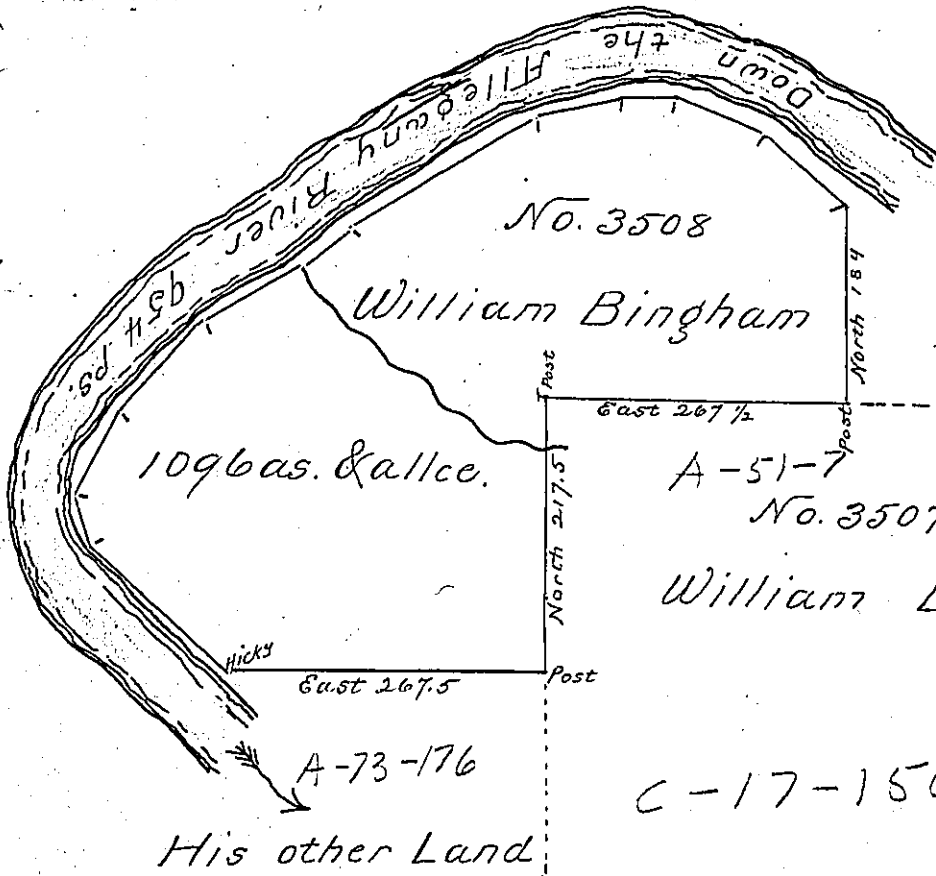


Courses & Distances  
down the Allegany River }

- N. 43. W. 216 ps ✓
- N. 75. W. 94 ✓
- N. 85. W. 46 ✓
- S. 82. W. 68 ✓
- S. 58. W. 198 ✓
- S. 48. W. 48 ✓
- S. 59. W. 96 ✓
- S. 45. W. 122 ✓
- S. 25. W. 58 ✓
- S. 23. E. 38 ✓
- S. 48. E. 160 ✓
- 954 ps.



# 3499  
William Bingham  
A36.52

A-51-7  
No. 3507  
William Bingham  
A-73-171  
C-17-150

In Pursuance of a Warrant No. 3508 dated the 14th day of December 1792 Surveyed the above described Tract of Land on the 24th day of August 1793 to William Bingham Situate on the Allegany River and adjoining his other Land in the late purchase District No. 6 containing one thousand and ninety six acres and the allowance of six pcent.

Ennion Williams Depy. Sr.  
To Daniel Brodhead Esqr. }  
Surveyor General. }

IN TESTIMONY that the above is a copy of the original remaining on file in the Department of Internal Affairs of Pennsylvania, made conformably to an Act of Assembly approved the 16th day of February, 1833, I have hereunto set my Hand and caused the Seal of said Department to be affixed at Harrisburg, this sixth day of August 1901

James W. Patton  
Secretary of Internal Affairs.